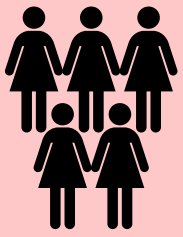


The BC Heads Together Think Tanks brought together brain injury survivors, family members, service providers, decision-makers and other stakeholders for a series of four virtual sessions in 2021 focusing on:

- **Behind the Bruises: Intimate Partner Violence and Brain Injury**
- **Surviving an Overdose: Understanding the Need for Brain Injury Support**
- **Thinking Outside the Box: Addressing the Chasms in Care**
- **Before You Mark the Ballot: Government Responsibility at all Levels**

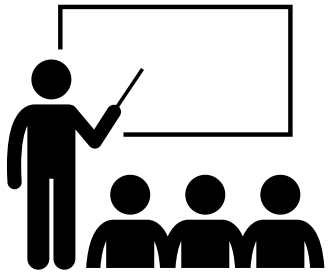
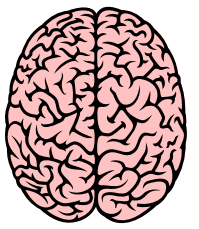
CARE PROVIDERS



INTIMATE PARTNER VIOLENCE (IPV)

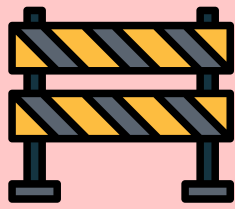
APPROXIMATELY, 230 000 CANADIAN WOMEN SUFFER FROM A BRAIN INJURY AS A RESULT OF IPV EVERY YEAR

SOAR/CATT ONLINE (2020)



ASK FOR EDUCATION AND TRAINING ON ALL ASPECTS OF BRAIN INJURY AND IPV. LEARN HOW TO SPEAK WITH SOMEONE WITH A BRAIN INJURY DUE TO IPV (STRANGULATION VS. CHOKING)

DIAGNOSIS SHOULD NOT BE A BARRIER TO ACCESSING ADEQUATE CARE AND SERVICES



REDUCE BARRIERS AND IMPROVE NAVIGATION BY COLLABORATING AND INTEGRATING CARE



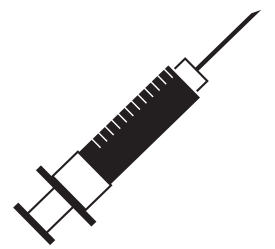
Created by Lia Rahdiah from Noun Project



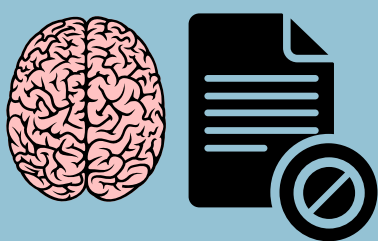
PREVENT IPV RELATED BRAIN INJURIES: WORK WITH ABUSERS ON HOW TO REGULATE EMOTION, DEVELOPING HEALTHY COPING SKILLS, AND BEING SAFE AROUND OTHERS

OPIOID CRISIS

SURVIVING AN OVERDOSE CAN CAUSE DELAYED NEURAL CONSEQUENCES RESULTING IN GREATER POTENTIAL OF MISDIAGNOSIS AND DELAYED TREATMENT



OVERDOSE SURVIVORS ARE NOT BEING TRACKED OR MONITORED FOR A BRAIN INJURY



ONGOING WRAPAROUND SUPPORTS ARE NEEDED FOR PEOPLE LIVING WITH HYPOXIC OR ANOXIC BRAIN INJURY

BRAIN INJURY FROM AN OVERDOSE CAN AFFECT PERSONALITY, MENTAL AND PHYSICAL HEALTH



CREATE EDUCATION AND TRAINING TOOLS FOR HEALTHCARE PROVIDERS ON THE EFFECTS OF HYPOXIC AND ANOXIC BRAIN INJURIES FROM AN OVERDOSE

CARE INTEGRATION

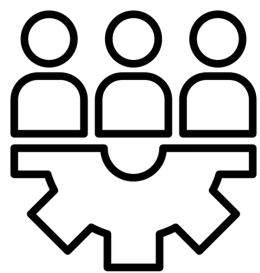
BRAIN INJURY IS OFTEN THE ROOT CAUSE OF MENTAL HEALTH AND SUBSTANCE USE ISSUES WHICH CAN LEAD TO HOMELESSNESS AND CRIMINALITY IF UNADDRESSED.



Created by HeadsOfBirds from Noun Project

MANY SURVIVORS, FAMILY AND YOUR COLLEAGUES ARE NOT AWARE OF THE OVERLAP OF BRAIN INJURY, MENTAL HEALTH AND SUBSTANCE USE ISSUES

IT'S ALMOST IMPOSSIBLE TO INTEGRATE CARE FOR PEOPLE WITH COMPLEX NEEDS IF YOU DON'T KNOW WHO ELSE IN YOUR COMMUNITY IS PROVIDING SERVICE.



Created by Jorge Namos from Noun Project

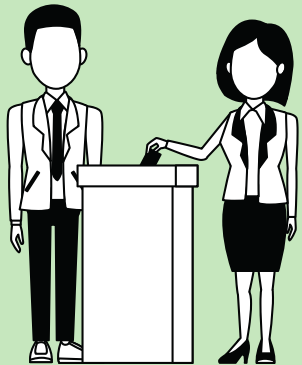
WORK WITH OTHERS IN YOUR COMMUNITY TO CREATE PRACTICAL WAYS TO INTEGRATE LOCAL SERVICES

TAKE ACTION NOW!

SILOED FUNDING PATTERNS CREATE MASSIVE CHASMS IN CARE FOR PEOPLE WITH CONCURRENT BRAIN INJURY, MENTAL HEALTH AND SUBSTANCE USE ISSUES



SHARE THE LIVED EXPERIENCE OF PEOPLE WHO FALL THROUGH THE GAPS IN SERVICE WITH DECISION MAKERS



GIVE DECISION MAKERS CONCRETE EXAMPLES OF WAYS TO FUND INTEGRATED SERVICES



Created by Alice Design from Noun Project



PROMOTE RESEARCH TO IDENTIFY BEST PRACTICES IN INTEGRATED BRAIN INJURY, MENTAL HEALTH AND SUBSTANCE USE ISSUES